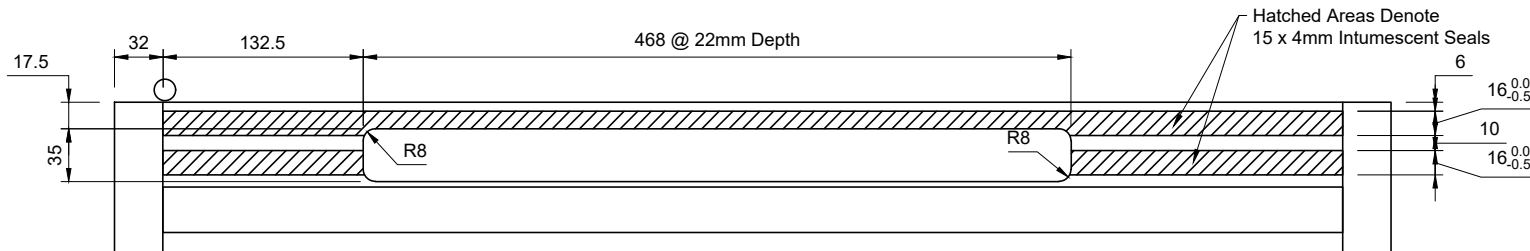
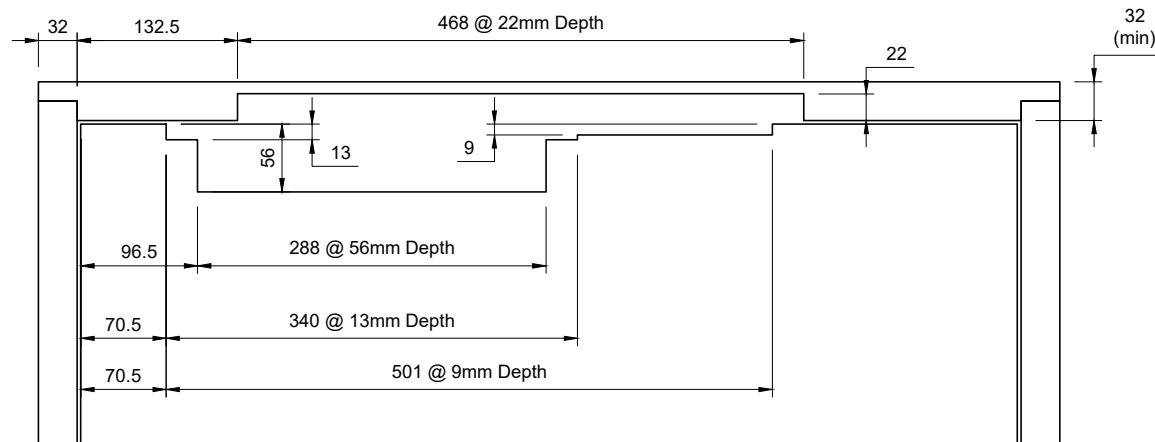
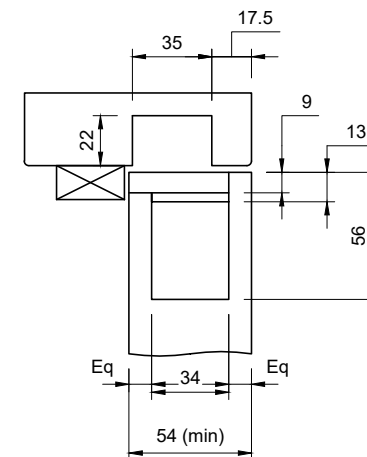


Frame Head Machining



All Dimensions Are
In mm Unless Stated

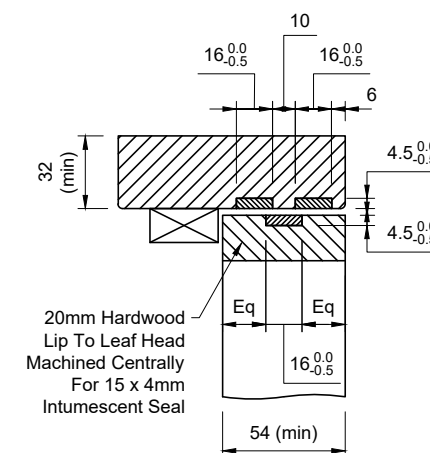
Head Machining



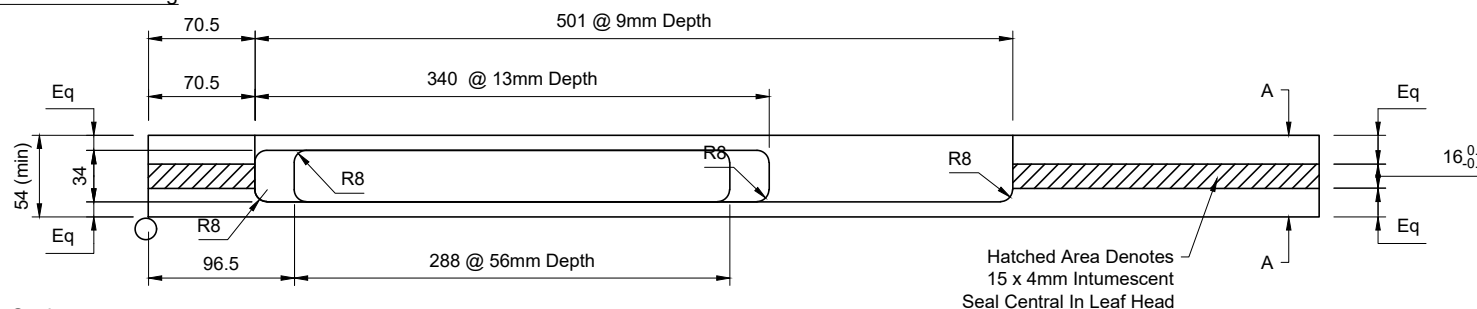
Notes:

- 20mm Hardwood Lip Min Density 640kg/m³ To Leaf Head
- Fit 15 x 4mm Intumescent Seal To Centre Line Of Leaf Head Prior To Machining For Closer
- Hardwood Frame Minimum Density 640kg/m³ & Minimum Section 32mm Thick
- Use Manufacturer's Intumescent Kit Only
- All Rebates In Door & Frame Head To Be Fitted With Intumescent Material As Per Manufacturer's Instructions See CF140
- Perimeter Intumescent Fire Seals To By-Pass The Slide Channel By A Minimum Of 10mm On The Opening Side
- **Dimensions Include Allowances For Intumescent Material**

Section A - A



Leaf Head Machining



Do Not Scale.

If In Doubt Ask!

Description: **Concealed Closer Machining - CF5229 - FD60 - Dorma ITS96 2-4**

| | | | | |
|---------------------------|-----------------------------|-----------|-------------------------|----------------|
| Drawn By: P. Brash | Approved: Approved | Revision: | Date: 22/03/2024 | Drawing No: |
| Size: See Above | Tolerance: +/- 0.5mm | | Fire Rating: | DP19559 |
| Job No: N/A | © Doorpac Ltd | | FD60S | Rev01 |